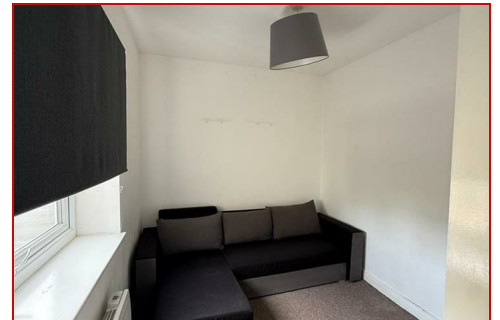




**BENJAMIN
STEVENS.**
estate agents



St. Albans Road, Watford WD17 1RA

£1,325 PCM

Benjamin Stevens are please to present this one bedroom first floor apartment located on the St Albans Rd, Watford.

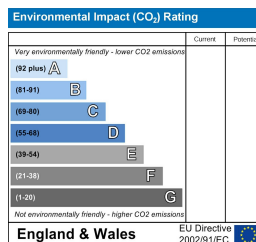
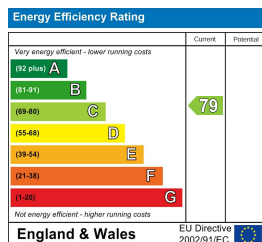
The property comprises of a kitchen area living/dining room room, shower room and bedroom. Ideally located only a short walk away from Watford Junction Station and you are within close proximity to local amenities

Transport links include local bus routes, Watford Junction Overground Station and links to the M1.

To arrange a viewing, call 020 3271 0111

St. Albans Road, Watford WD17 1RA





Edgware Office- 194 Station Road, Edgware, HA8 7AT. Tel: 020 8958 1118
 Bushey Heath Office- 59 High Road, Bushey, WD23 1EE. Tel: 020 8950 7777
www.benjaminstevens.co.uk